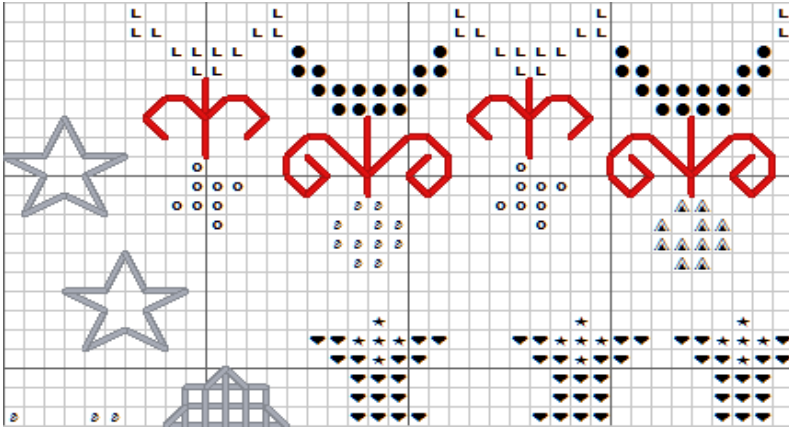


CORRECTIONS FOR S-1109 CHRISTMAS QUILTS

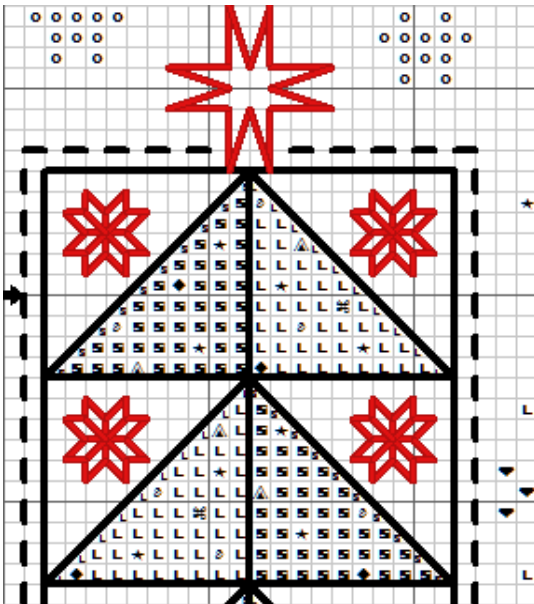
Parts of this patterns were supposed to be printed with red lines to show you where to stitch using Rainbow Gallery's PB25 thread. My printer guy did not do this--sorry for the confusion!

Here are some samples of the places where RB25 should be used:



BS: Ribbons PB25 (shown as red)

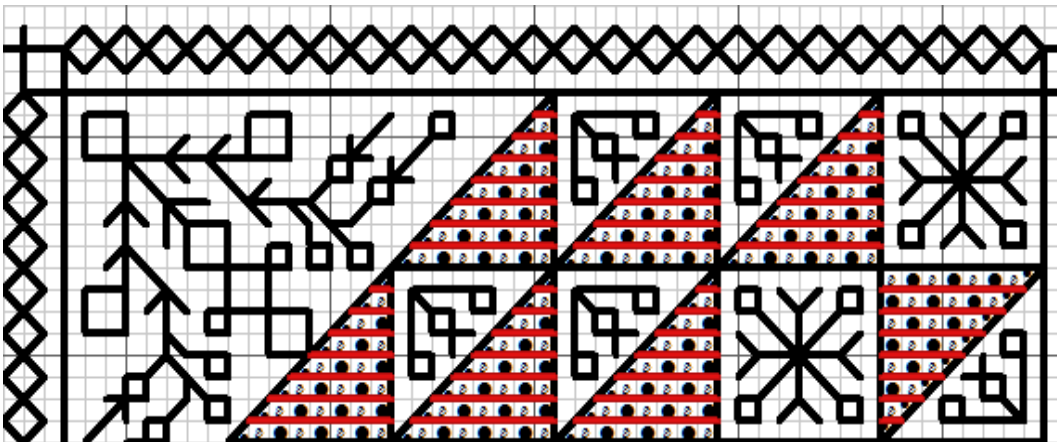
This will apply to the border across top of the design.



QUILT BLOCK #1---(Tall Tree)

BS & LS: Stars in quilt block PB25 (shown as red)

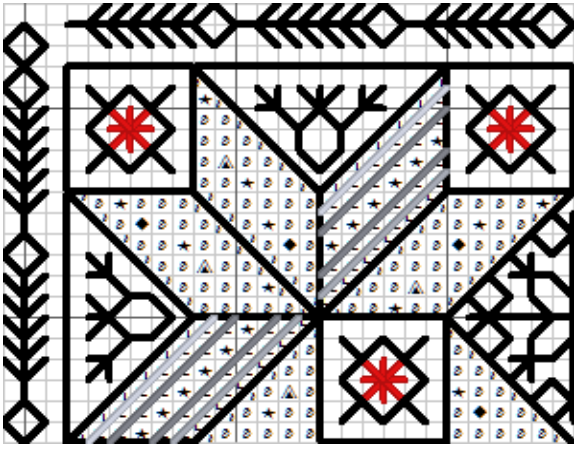
This will apply to all stars in the entire quilt block.



Quilt Block #2

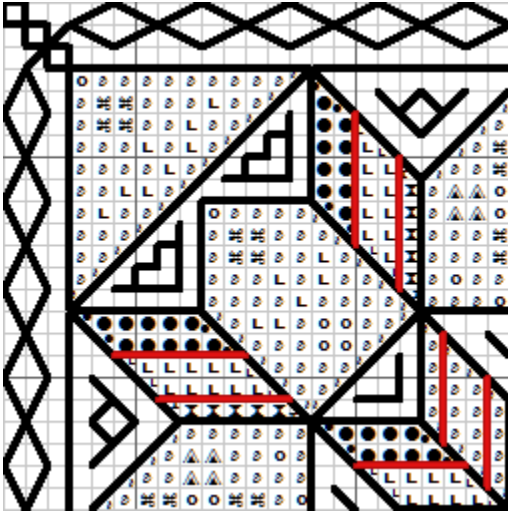
BS: Stripes in triangles (shown as red) PB25

This will apply to entire block.



Quilt Block #3
 Algerian Eyelets (Shown as red) PB25

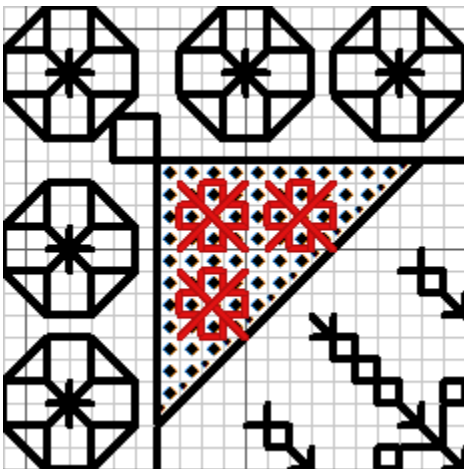
This will apply to entire quilt block.



Quilt Block #4

BS: Stripes (shown as read) PB25

This will apply to entire quilt block.



Quilt Block #6

After regular cross stitching--add PB25 stitches
 (shown as read)

This will apply to entire quilt block.

My apologies for any confusion this has caused!
Karen Kluba

ROSEWOOD MANOR
 WWW.ROSEWOODXSTITCH.COM