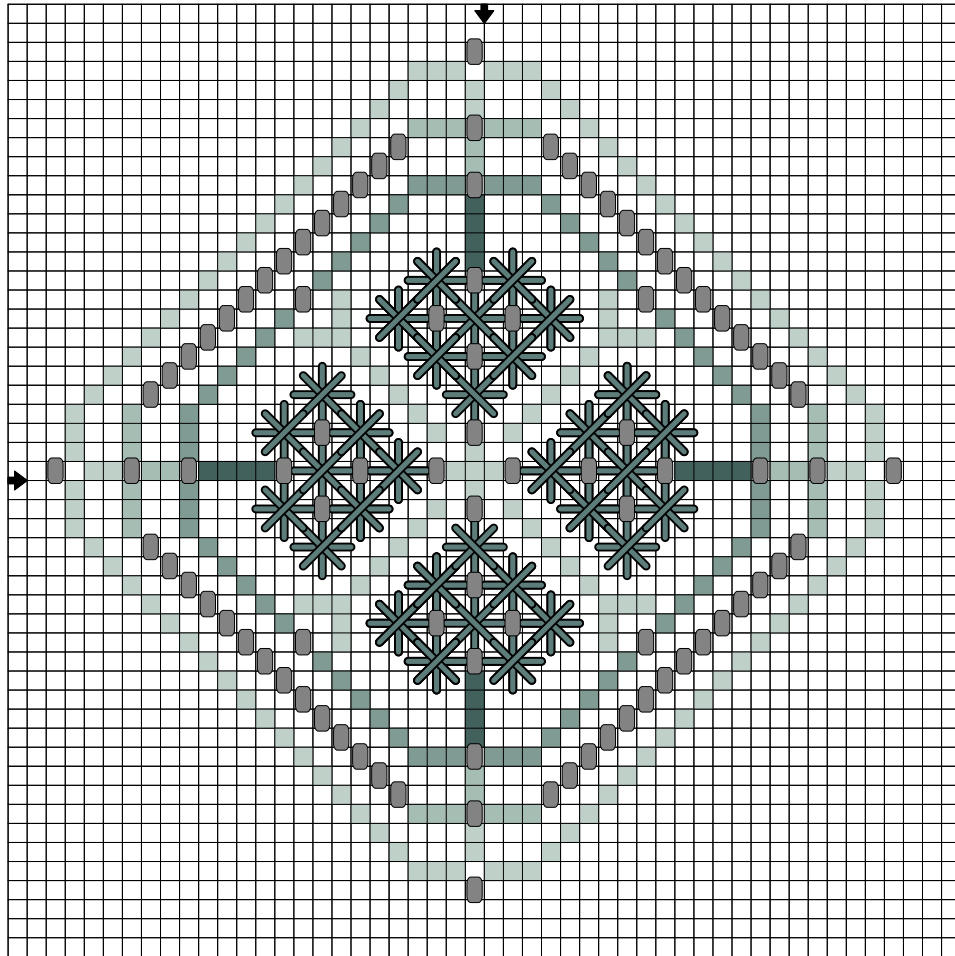


"QUAKER CHRISTMAS TREES"

COMPLIMENTARY Mini Chart from Rosewood Manor

NOT FOR RESALE--MAY NOT BE COPIED



- DMC**
- 924
 - 926
 - 927
 - 928
 - 3768
 - 03007

- Bead MH**
- 03007

DESIGN SIZE:
50w x 50h stitches

***Fabric count will determine size of finished piece.

Fabric: Your choice, I like Antique White Lugana.

*Stitch two stands over two threads.



ROSEWOOD MANOR
13531 Six Points Rd.
Carmel, IN 46032
Phone 317-574-9186
www.rosewoodxstitch.com
E-mail: karen@rosewoodxstitch.com

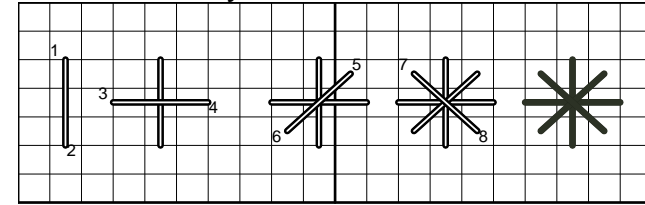
BE CREATIVE!

- **Using waste canvas for wash away grid, stitch this motif on front of apron, you can add more motifs--3 across the front.
- **Create a wine bottle cover and add the motif to the front, this would be a lovely hostess gift.
- **Change the colors to traditional Christmas colors.

Merry Christmas and Happy New Year!

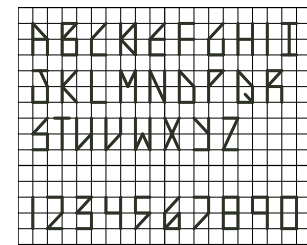
©Copyright Karen Kluba 2012 All rights reserved

Diamond Smyrna--over 6: 1 strand



All stitches go over the last stitch.

DMC 3768



Use this alphabet and numbers to personalize your ornament.

Enjoy! Karen Kluba